

# GUIDE TO NEW BOILER INSTALLATION AND SERVICING IN THE UK AND IRELAND



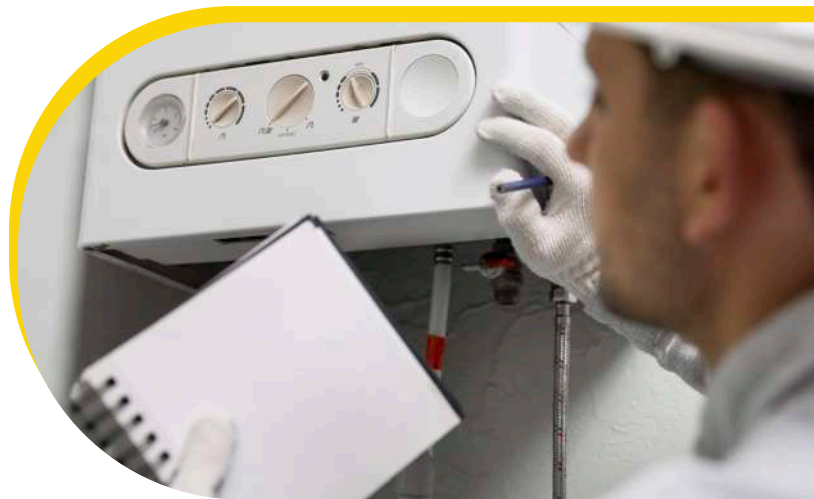
Installing a new boiler is a significant investment for homeowners. A modern, efficient boiler can reduce your energy bills, provide reliable heating and hot water, and contribute to a more comfortable home. However, choosing the right boiler and ensuring it is properly installed and regularly serviced is crucial for long-term performance. This guide will cover everything you need to know about new boiler installation and the importance of regular boiler servicing.

## 1. UNDERSTANDING THE IMPORTANCE OF A NEW BOILER INSTALLATION

### WHY UPGRADE YOUR BOILER?

Upgrading to a new boiler offers several benefits, especially if your current system is more than 10-15 years old:

- **Energy Efficiency:** Modern boilers are more energy-efficient, with many models boasting efficiency ratings of 90% or higher. This means more heat from every unit of energy consumed, leading to lower energy bills.
- **Reliability:** New boilers are less likely to break down, offering more consistent heating and hot water. This is particularly important during the colder months in the UK and Ireland.
- **Environmental Impact:** Upgrading to a high-efficiency boiler reduces your home's carbon footprint, contributing to a more sustainable environment.
- **Home Value:** A new boiler can increase the value of your property, as potential buyers are likely to value the energy savings and reliability it offers.



### TYPES OF BOILERS AVAILABLE

In the UK and Ireland, there are three main types of boilers to consider:

- **Combi Boilers:** These are the most popular type in the UK and Ireland, especially for smaller homes. Combi boilers provide instant hot water and heating without the need for a separate water tank. They are compact and efficient, making them ideal for homes with limited space.

- **System Boilers:** System boilers are suitable for larger homes with more than one bathroom. They store hot water in a cylinder, which means multiple taps can run simultaneously without a drop in water pressure.
- **Regular Boilers:** Also known as conventional or heat-only boilers, these are best for homes with traditional heating systems that include a hot water cylinder and a cold water storage tank. They are suitable for larger properties or homes with older radiators.

## 2. STEPS TO INSTALLING A NEW BOILER

### CHOOSING THE RIGHT BOILER

Selecting the right boiler for your home is crucial. Consider the following factors:

- **Home Size and Hot Water Needs:** A smaller home with one bathroom might benefit from a combi boiler, while a larger home with multiple bathrooms might require a system or regular boiler.
- **Energy Efficiency:** Look for boilers with high energy efficiency ratings. Boilers with an A-rating on the ErP (Energy-related Products) scale are the most efficient and can save you money on energy bills.
- **Fuel Type:** Most boilers in the UK and Ireland run on natural gas, but if your home is not connected to the gas grid, you may need to consider an oil, LPG, or electric boiler.

### HIRING A QUALIFIED INSTALLER

Boiler installation is a complex task that must be carried out by a qualified professional to ensure safety and compliance with local regulations:

- **Gas Safe Registered:** In the UK, it is mandatory that the installer is Gas Safe registered. This ensures they are qualified to work with gas appliances. In Ireland, installers should be registered with the Registered Gas Installer (RGI) scheme.
- **Experience:** Choose an installer with experience in fitting the type of boiler you've selected. This ensures they are familiar with the specific installation requirements.

- **Obtain Quotes:** Get multiple quotes to ensure you're getting a fair price. Compare not only the cost but also the services included, such as the removal of the old boiler and post-installation checks.

### INSTALLATION PROCESS

The installation process generally involves the following steps:

- **Assessment:** The installer will assess your home's heating needs and recommend a suitable boiler. They will also inspect your existing heating system to ensure it's compatible with the new boiler.
- **Removal of the Old Boiler:** If replacing an existing boiler, the installer will safely disconnect and remove the old unit.
- **Installing the New Boiler:** The new boiler will be installed in the chosen location, which may be the same as your old boiler or a new location depending on space and access requirements.
- **Connecting the System:** The installer will connect the boiler to your heating and hot water system, ensuring all connections are secure and comply with safety regulations.
- **Commissioning and Testing:** Once installed, the boiler will be tested to ensure it is working correctly and efficiently. The installer should also provide a demonstration of how to operate the new system.



## 3. THE IMPORTANCE OF REGULAR BOILER SERVICING

### WHY REGULAR SERVICING IS ESSENTIAL

Regular boiler servicing is crucial for maintaining the efficiency, safety, and longevity of your boiler. Here's why:

- **Safety:** A regular service helps identify and fix potential safety issues, such as gas leaks or carbon monoxide leaks, which can be deadly if left unchecked.
- **Efficiency:** Over time, boilers can lose efficiency due to wear and tear. Servicing includes cleaning and adjustments that help maintain your boiler's efficiency, saving you money on energy bills.
- **Preventing Breakdowns:** Regular servicing helps identify minor issues before they turn into major, costly repairs. This proactive approach can prevent inconvenient and expensive breakdowns.
- **Warranty Compliance:** Many boiler manufacturers require annual servicing as a condition of their warranty. Failing to service your boiler regularly may void the warranty, leaving you responsible for any repairs.

### WHAT DOES A BOILER SERVICE INVOLVE?

A standard boiler service typically includes:

- **Visual Inspection:** The engineer will check the boiler and associated components for any visible signs of damage or wear.
- **Flue Check:** The flue will be inspected to ensure it is free of blockages and safely expelling gases.



- **Component Checks:** Key components such as the heat exchanger, burner, and ignition system will be checked and cleaned if necessary.
- **Gas Pressure Check:** The gas pressure will be tested to ensure the boiler is receiving the correct amount of gas for efficient operation.
- **Safety Tests:** Safety devices and controls will be tested to ensure they are functioning correctly.
- **Service Report:** After the service, you'll receive a report detailing the work carried out and any recommendations for further maintenance.

### WHEN TO SERVICE YOUR BOILER

It's recommended to service your boiler once a year, ideally before the winter months when it will be in highest demand. This ensures your boiler is in peak condition for the colder season.

### CONCLUSION

Installing a new boiler is a smart investment that can improve your home's energy efficiency, reliability, and overall comfort. By choosing the right boiler, hiring a qualified installer, and ensuring regular servicing, you can enjoy the benefits of a modern heating system for years to come. Regular boiler servicing not

only helps maintain efficiency and safety but also ensures that your boiler lasts longer, providing peace of mind and cost savings in the long run. Whether you're upgrading your existing boiler or maintaining your current one, following these guidelines will help you make the most of your heating system.